



Harbor Gate Shopping Center

Richmond, California

NOW LEASING

***Pad and shop space
now available.
Drive-thru ok.***

For information, contact:

Tracey O'Neill

toneill@crosspointrealty.com

CA DRE #01429921

D. Carter Hemming

chemming@crosspointrealty.com

CA DRE #01123464

Phone: 415-288-6888

Fax: 415-288-6877

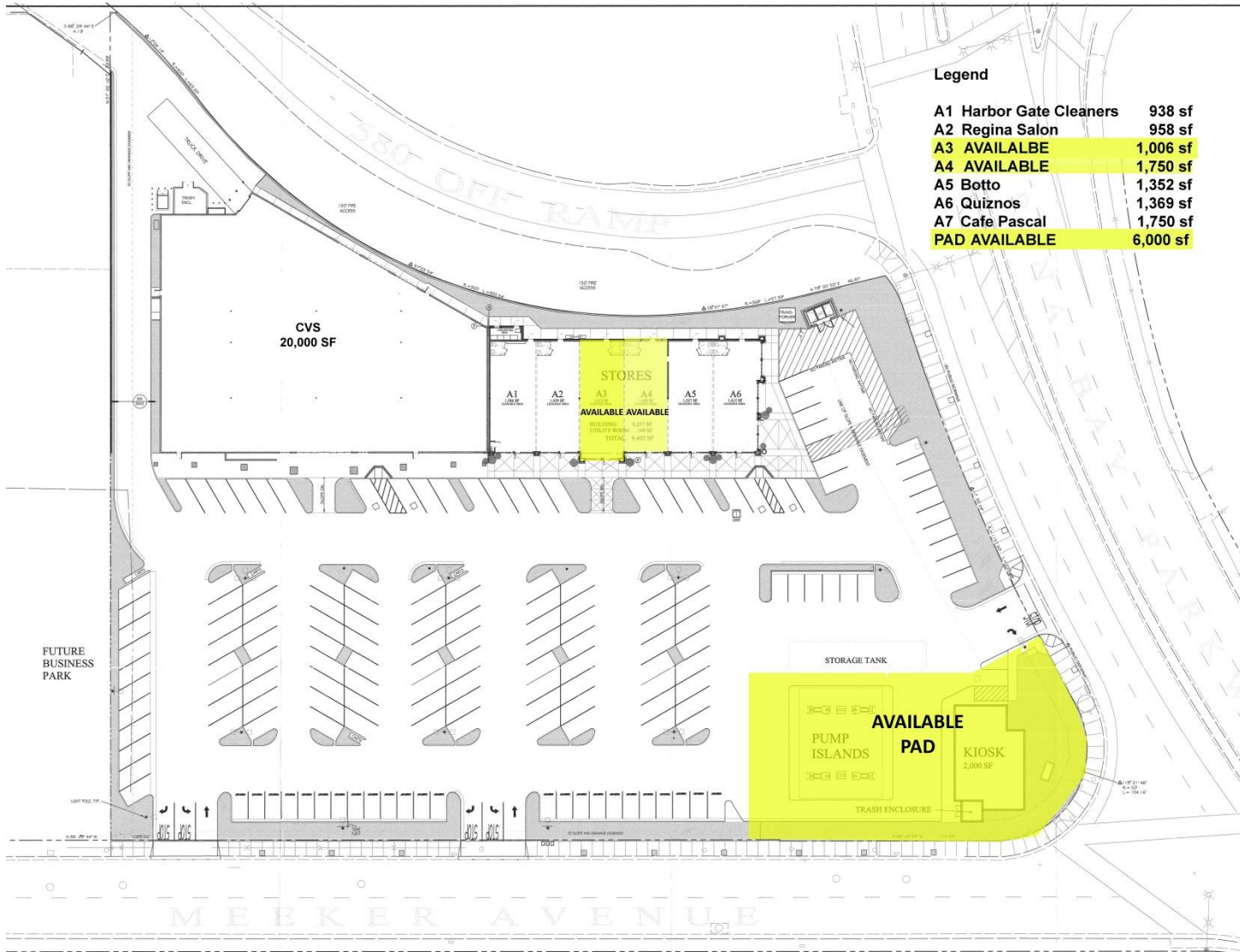
Crosspoint Realty Services, Inc.
260 California Street, 4th Floor
San Francisco, CA 94111
www.crosspointrealty.com



Harbor Gate Shopping Center

Richmond, California

SITE PLAN



Legend

A1 Harbor Gate Cleaners	938 sf
A2 Regina Salon	958 sf
A3 AVAILABLE	1,006 sf
A4 AVAILABLE	1,750 sf
A5 Botto	1,352 sf
A6 Quiznos	1,369 sf
A7 Cafe Pascal	1,750 sf
PAD AVAILABLE	6,000 sf

CVS
20,000 SF

STORES

A1 A2 A3 A4 A5 A6

AVAILABLE AVAILABLE

RESIDENCE UTILITY ROOM TOTAL 4,480 SF

STORAGE TANK

AVAILABLE
PAD

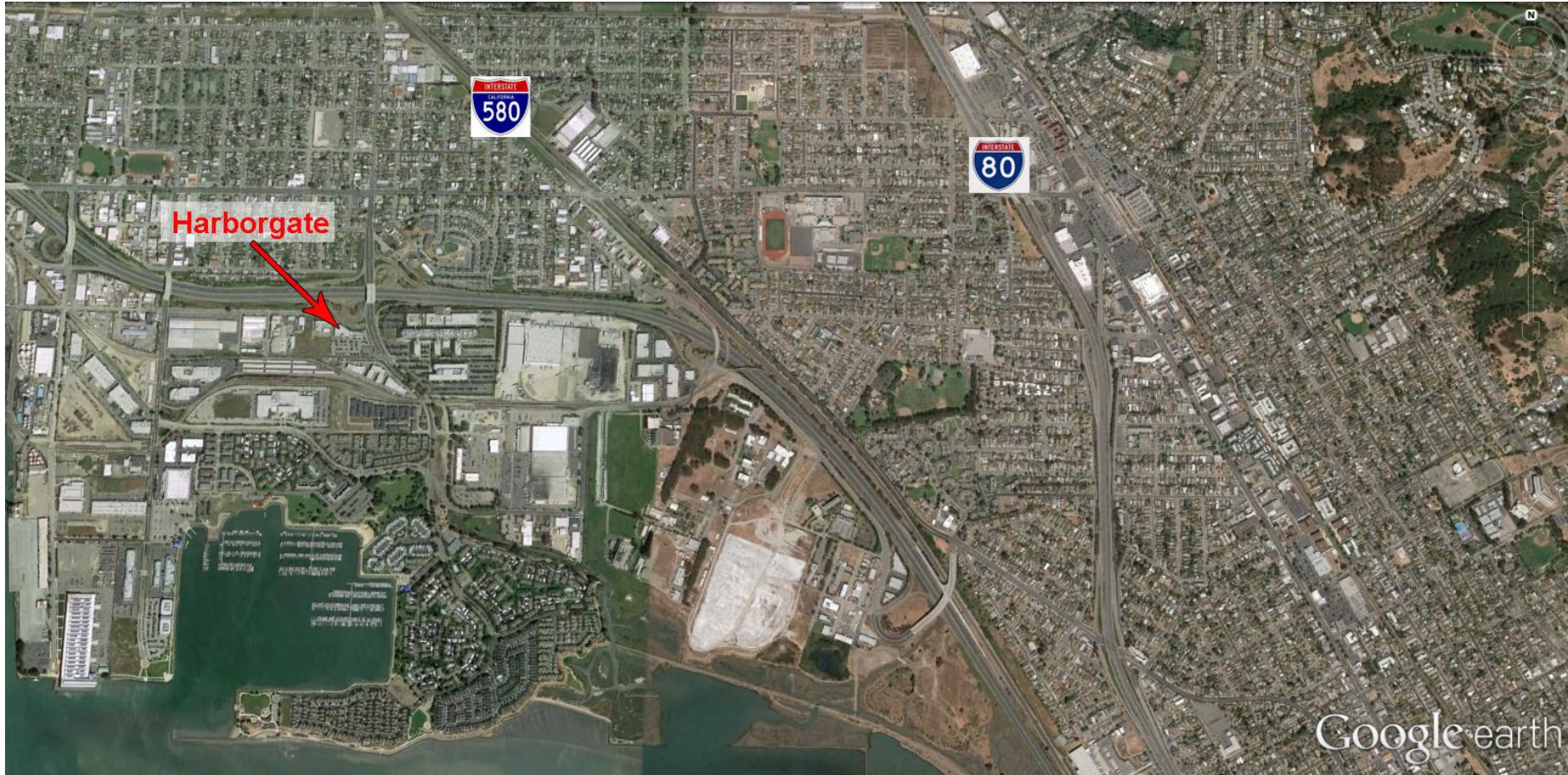
PUMP ISLANDS

KIOSK
2,000 SF

TRASH ENCLOSURE

MEEKER AVENUE

MARKET AREA



Tracey O'Neill
toneill@crosspointrealty.com
CA DRE #01429921

D. Carter Hemming
chemming@crosspointrealty.com
CA DRE #01123464

Crosspoint Realty Services, Inc.
260 California Street, 4th Floor
San Francisco, CA 94111
www.crosspointrealty.com

Phone: 415-288-6888
Fax: 415-288-6877